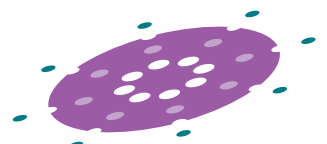


IMAGE-PRO[®] EXPRESS



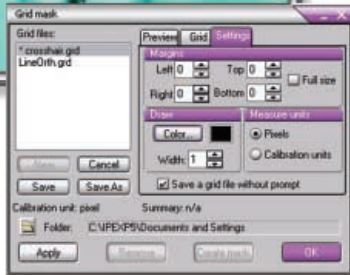
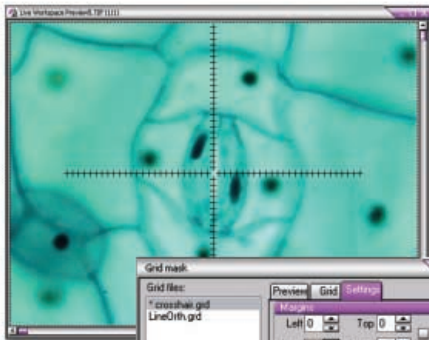
THE COST-EFFECTIVE IMAGE CAPTURE AND ENHANCEMENT SOLUTION FROM THE IMAGE-PRO FAMILY



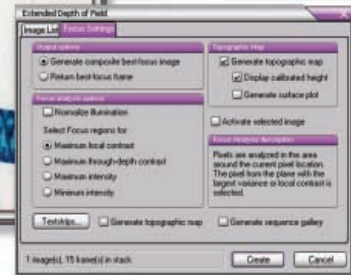
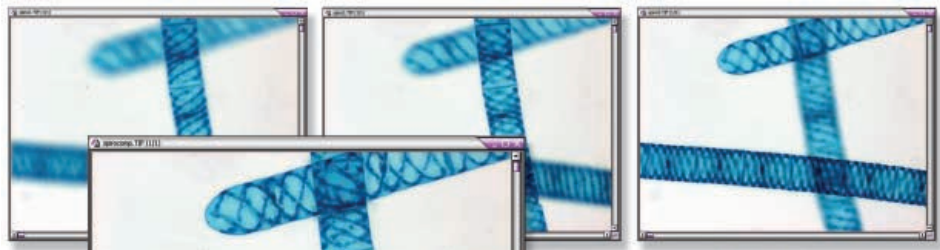
MediaCybernetics[®]
From Images to Answers[®]

Image-Pro[®] EXPRESS

Experience the Speed and



Apply Crosshair grids for precise placement of images during capture



Create in-focus composite images from a series of partially in-focus images with Extended Depth of Field (EDF)

From Images to Answers

Image-Pro Express is the cost-effective image capture and enhancement software perfect for basic imaging or image capture stations. As the first step in the Image-Pro software series, Image-Pro Express comes equipped with the basic features needed to capture and enhance images for scientific, medical, and industrial research.

Numerous Capture Options

Image-Pro Express is a perfect addition to your imaging station. It allows you to quickly capture and enhance images with most popular digital cameras, video cameras, scanners, microscopes, and image databases.

Easy Image Enhancement

Image-Pro Express allows you to quickly process images right at your capture station to guarantee high quality, accuracy, and reproducibility. Tools such as Extended Depth of Field (EDF) allow you to prepare images for detailed analysis.

Upgrade for Additional Features

As your imaging requirements grow, you may find that you will need the power of Image-Pro Discovery or Image-Pro Plus. These next steps in the Image-Pro Family offer advanced imaging tools and the opportunity to become part of an imaging community. All image enhancements made with Image-Pro Express are compatible with Image-Pro Discovery and Image-Pro Plus. You can upgrade to either of these products easily and at an affordable price.

The Image-Pro Family

The Image-Pro software series reflects the maturity of over 20 years of development, evolution, and user feedback. We offer three unique Image-Pro packages to accommodate a variety of imaging needs.

■ Image-Pro[®] Express

Perfect for basic imaging or for image capture stations, Image-Pro Express offers quick capture and enhancement tools.

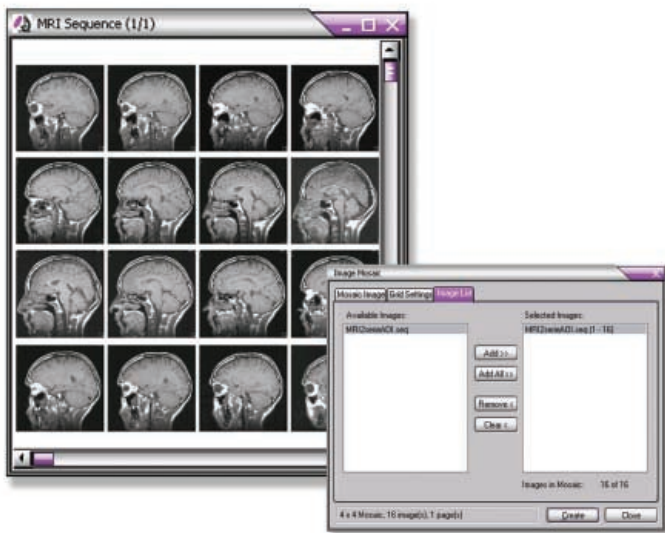
■ Image-Pro[®] Discovery

More advanced than Image-Pro Express, Image-Pro Discovery offers added measurement and analysis capabilities.

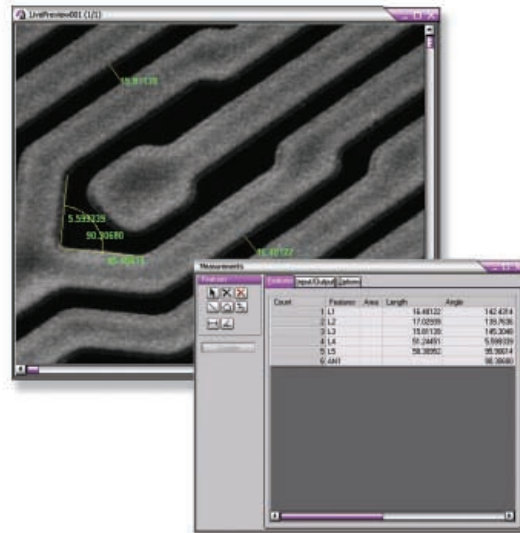
■ Image-Pro[®] Plus

The ultimate imaging solution, Image-Pro Plus includes all of the features of Image-Pro Discovery along with added tools and the ability to write customized macros and plug-ins.

Quality of Image-Pro Express...



Acquire, create, and play back a sequence of images



Measure images before you acquire them with Live Image Preview

Image-Pro Express Features...

Acquire

- Acquire, create, and play back a sequence (stack) of images
- Acquire images from cameras, scanners, or electronically stored files
- Capture multiple images at user-specified time intervals

Enhance

- Edit image intensity level with Display Range
- Control image Brightness, Contrast, and Gamma with Contrast Enhancement
- Enhance with Best Fit, Linear, Bell, Logarithmic, and Exponential Equalization tools
- Invert, reset, and apply contrast to images
- Use automatic image inversion
- Simultaneously view entire image in one window and a magnified area in a second window with Local Zoom
- Use Dye Manager to apply dye tints to gray scale images by choosing emission wavelength

Process

- Use Background Subtraction and Correction
- Work with Enhancement filters that include Low-Pass, Hi-Pass, Gaussian, Hi-Gaussian, Sharpen, Flatten, Median, Rank, and Local Equalization
- Create in-focus composite images from partially in-focus image stacks with EDF
- Apply filters to frames in a sequence
- Apply crosshair grids for precise placement of images during capture
- Extract and merge multiple color channels (including RGB, HSI, HSV, and YIQ) simultaneously with Color Channel tools
- Create, print, or save a collage of several images with Mosaic Image

Measure

- Calibrate intensity and spatial measurements
- Create and display spatial calibration markers
- Work with pre-defined spatial calibration units
- Outline objects automatically with Auto-Trace features
- Measure live images with Live Image Preview
- Export measurements to Microsoft® Excel via DDE

Analyze

- Calculate straight, circular or freeform line profiles and AOI image histograms
- Display raw data or histograms
- Define and manage multiple areas of interest
- Obtain quick distance measurements with display on the image

Annotate

- Work with non-destructive image annotation
- Add text, simple graphics, and arrows
- Modify palette or colors

Generate Reports

- Create customized reports with images, data, and text
- Create and save report templates
- Export to IQbase™ (see back panel for details)

Print and Publish

- Print frames from a sequence or montage of single images with Mosaic Printing feature
- Output high quality gray scale and color images to Windows® printers
- Experience complete control of image position on your page
- Print titles to make poster-sized prints
- Use Test Strip feature to select best output
- Use Screen Capture feature to capture an individual window, a user-defined area, or an entire screen to an image file

Image-Pro[®] EXPRESS

Image and Data File Format Support

- Read and write files in TIFF, JPEG, BMP, CUT, EPS, HDF, Photo CD, PCT, PCX, TGA, and FLB (Flat Binary)
- Read and write AVI files
- Convert files to and from the above formats
- Work with 8-, 12-, 16-, 24-, 36- and 48-bit floating point images
- Compress images with JPEG, LZW, and RLE
- Batch convert files
- Output data files to ASCII, WK1, or XLS as input for spreadsheets
- Transfer images, data graphs, and data files via DDE or Clipboard
- Make best use of memory for images up to 64MB
- Store images on capture boards or in memory

System Requirements

Operating System	Computer	RAM	Storage
Windows [®] 2000	500 MHz or better	256 MB RAM	10 GB*
Windows [®] XP Pro	750 MHz or better	512 MB RAM	20 GB*

- IBM Compatible PC
- A VGA (or better) resolution 256 color display device
- Windows compatible mouse, keyboard, and CD-ROM drive

* Suggested storage size for large image files generated by advanced cameras.

**OUR WORLDWIDE DEALER NETWORK
IS THERE TO ASSIST YOU. FOR A DEALER
IN YOUR AREA, CALL TODAY!**

Archive Seamlessly with IQbase

IQbase is an intelligent database designed especially for managing and archiving information derived from images.

- Archive seamlessly from Image-Pro Express
- Never repeat research due to lost data
- Eliminate separate spreadsheet logs and paper notebooks
- View images and related data simultaneously
- Mine new knowledge from existing images and data
- Share images via email or Web directly from IQbase
- Generate reports in a variety of document or Web formats

For more information on IQbase, contact your Image-Pro Express dealer or visit www.mediacy.com/iqbase.



IQbase[™]

HEADQUARTERS

Media Cybernetics, Inc.
8484 Georgia Avenue, Suite 200
Silver Spring, MD 20910 USA
Phone: +1.301.495.3305
Fax: +1.301.495.5964
Email: info@mediacy.com
Web: www.mediacy.com

INTERNATIONAL OFFICES

Europe:
Phone: +31.715.730.642
Fax: +31.715.730.640

United Kingdom:
Phone: +44.(0).1189.794065
Fax: +44.(0).1189.797999

Asia Pacific:
Phone: +65.6245.4965
Fax: +65.6245.4967



Media Cybernetics, the Media Cybernetics logo, Image-Pro, and IQbase are registered trademarks or trademarks of Media Cybernetics, Inc. All other trademarks are used with permission and remain the property of their respective owners. ©2004, Media Cybernetics, Inc. All rights reserved.