

Color-Pro™

Accurate Color Rendering for Your Entire Imaging System An Image-Pro® Plug-in Module

Consistent Color Results

Manage the display of color fidelity of your images to see accurate, consistent colors across your imaging system. Image-Pro's new Color-Pro Plug-in Module ensures that the colors you see through your microscope eyepiece will be the same colors you will see on your monitor. Color-Pro allows you to remove the reliance on personal, subjective observation for qualitative interpretation and move toward more reliable and quantitative results. It is particularly valuable for pathologists, production facilities, and others who rely heavily on color interpretation to make important decisions.

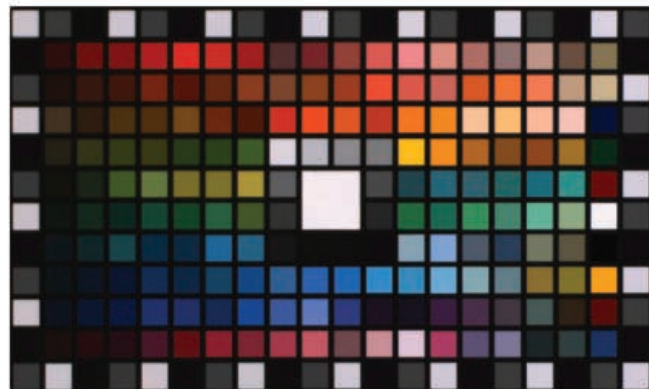
Accurate, Repeatable Analyses

Many analyses are based upon the intensities within each RGB channel for identification, classification and/or quantitation. With Color-Pro color management, you can be sure the color-corrected values will not be compromised. Analysis accuracy will be independent of the response of your camera.

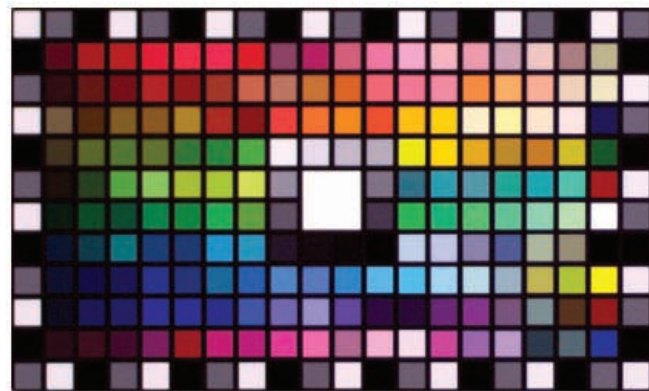
Overview

The Color-Pro Plug-in Module installs an International Color Consortium (ICC) color engine into Image-Pro Plus 5.0, Image-Pro Discovery 5.0 or Image-Pro Express 5.0. It allows ICC profiles for input devices (like a camera), display devices, light sources and output devices to be corrected automatically or applied to collected image files in order to maintain accurate color rendering.

One of the greatest sources of error for accurate display is your computer monitor. To solve this problem, the Color-Pro Plug-in Module kit also contains a GretagMacbeth™ Eye-One Monitor Profile Package which allows you to periodically calibrate your display as well as create an ICC profile for your PC monitor or LCD display. ICC profiles for many cameras supported by the Image-Pro family are also provided with the plug-in module. Thus an ICC workflow for the most popular camera/microscope combinations can be immediately established.



Before Color Correction



After Color Correction

Features:

- Every image can have its own color space
- Color profiles associated with images can be saved/loaded in TIFF files
- Convert images from one color space to another
- Measure XYZ and L*a*b* colors according to the assigned image color space
- Includes colorimeter and software to calibrate and profile a PC monitor or LCD display
- Includes ICC profiles for cameras supported by the Image-Pro family

FROM IMAGES TO ANSWERS®

How Color Management Works in the Image-Pro Environment

Device profiles provide the Color-Pro management system with the information necessary to convert color data between native device color spaces (monitors, printers, etc.) and device independent color spaces (true representations of colors as perceived by the human eye). The ICC specification divides color devices into three broad classifications: input devices, display devices, and output devices. For each device class, a series of base algorithmic models perform the transformation between color spaces. These models provide a range of color quality and performance results which offer different trade-offs in memory footprint, performance, and image quality.

The device profiles obtain their openness by using a well-defined reference color space and by their ability to be interpreted by other ICC compliant operating systems or applications (like Adobe® System's Photoshop® or JASC's Paint Shop™- Pro®). In combination with profiles for other devices, color transformations may be determined that enable colors captured on one device to be reproduced satisfactorily on many others. The information required in the profile ensures the level of color fidelity selected by the user and enables the default color management module (CMM) to transform color information between native device color spaces. The CMM provided within Color-Pro is licensed from GretagMacbeth, the acknowledged worldwide leader for color management.

In addition to providing a cross-platform standard for the actual profile format, the specification also describes the convention for embedding these profiles within graphics documents and images. Embedded profiles allow users to transparently move color data between different computers, networks, and operating systems without worrying about whether the necessary profiles are on the destination systems. These embedded profiles allow the interpretation of the associated color data.

Color-Pro Plug-in Module Kit Includes:

- Color-Pro Plug-In Module for Image-Pro 5.0 family of products
- Eye-One Monitor Profile Package

GretagMacbeth Eye-One Monitor Profile Package

The Eye-One Monitor Profile Package includes a colorimeter and software that enables you to adjust your monitor to display consistent, predictable color. The Eye-One Display compact colorimeter measures the color output of your monitor – either CRT or LCD. The Eye-One Match 2.0 Software works effortlessly with the Eye-One Display to build an ICC profile.

Eye-One Features

- USB powered
- Use at multiple workstations with no additional licensing fee
- Includes counterweight for easy use with any CRT or LCD monitor
- Macintosh® and PC compatible – Classic, OS X, Windows® 2000, XP Professional (Image-Pro products are only available for the PC)



Cameras Currently Profiled by Color-Pro

- Media Cybernetics' Evolution™ MP 5.0, Evolution™ MP 3.3, Evolution™ VF Color, Evolution™ LC Color, and CoolSNAP™-Pro_{cf} Color
- QImaging® Micropublisher 5.0, Micropublisher 3.3, and QICam
- Photometrics® CoolSNAP™_{cf}
- PixeLINK™ A-662
- Olympus® DP70

**Our Worldwide Dealer Network is There to Assist You.
For a Dealer In Your Area, Contact us Today!**

Color-Pro™
PLUG-IN
An Image-Pro® Solution


MediaCybernetics
From Images to Answers®

Media Cybernetics, Inc.
8484 Georgia Avenue, Suite 200
Silver Spring, MD 20910 USA
Phone: +1.301.495.3305
Fax: +1.301.495.5964
Email: info@mediacy.com
Web: www.mediacy.com

Europe: Phone: +31.715.730.642
Fax: +31.715.730.640

United Kingdom:
Phone: +44.(0).1189.794065
Fax: +44.(0).1189.797999

Asia Pacific: Phone: +65.6245.4965
Fax: +65.6245.4967